

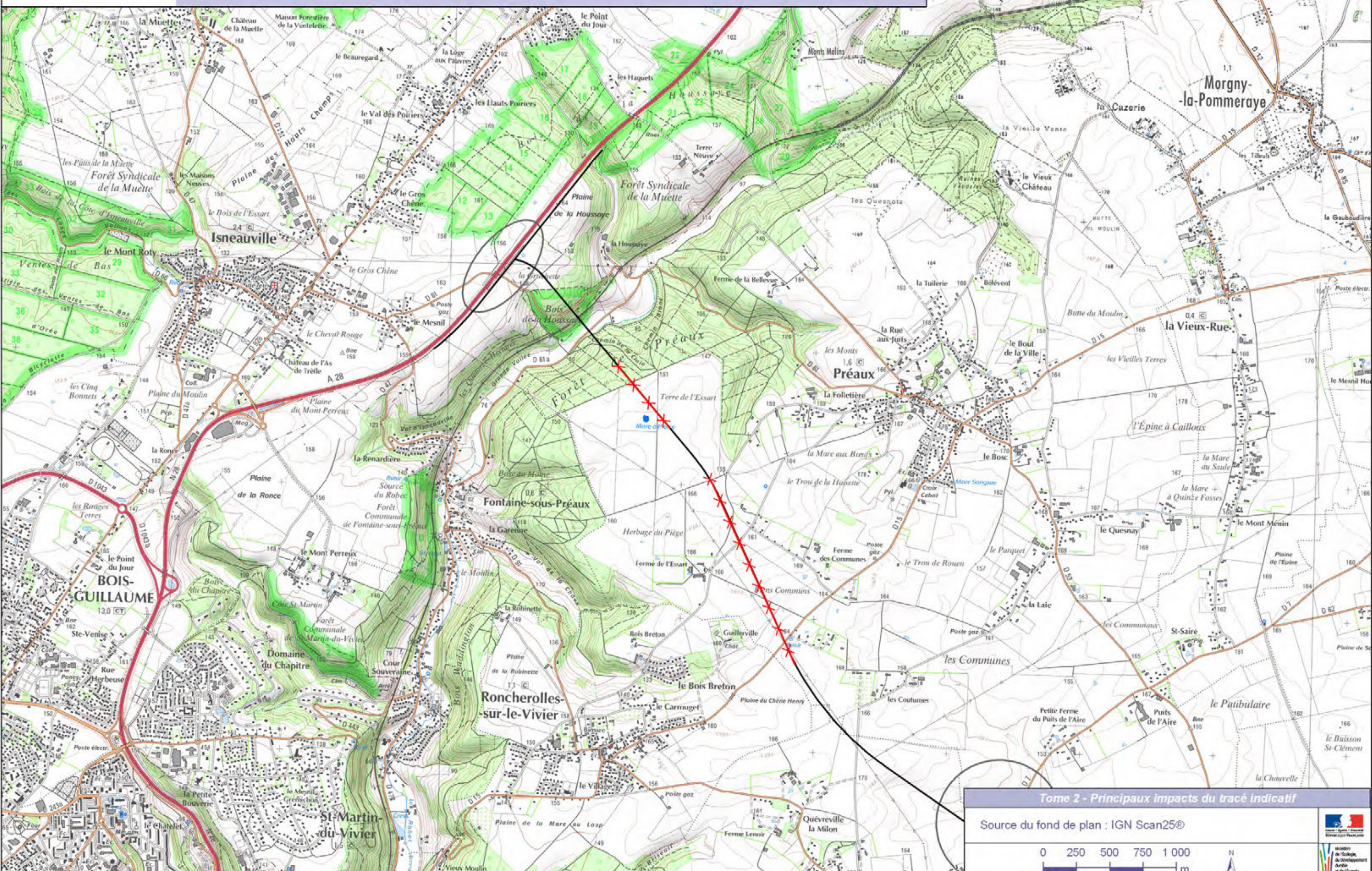
Tome 2 : Présentation des impacts et mesures au niveau de la variante retenue

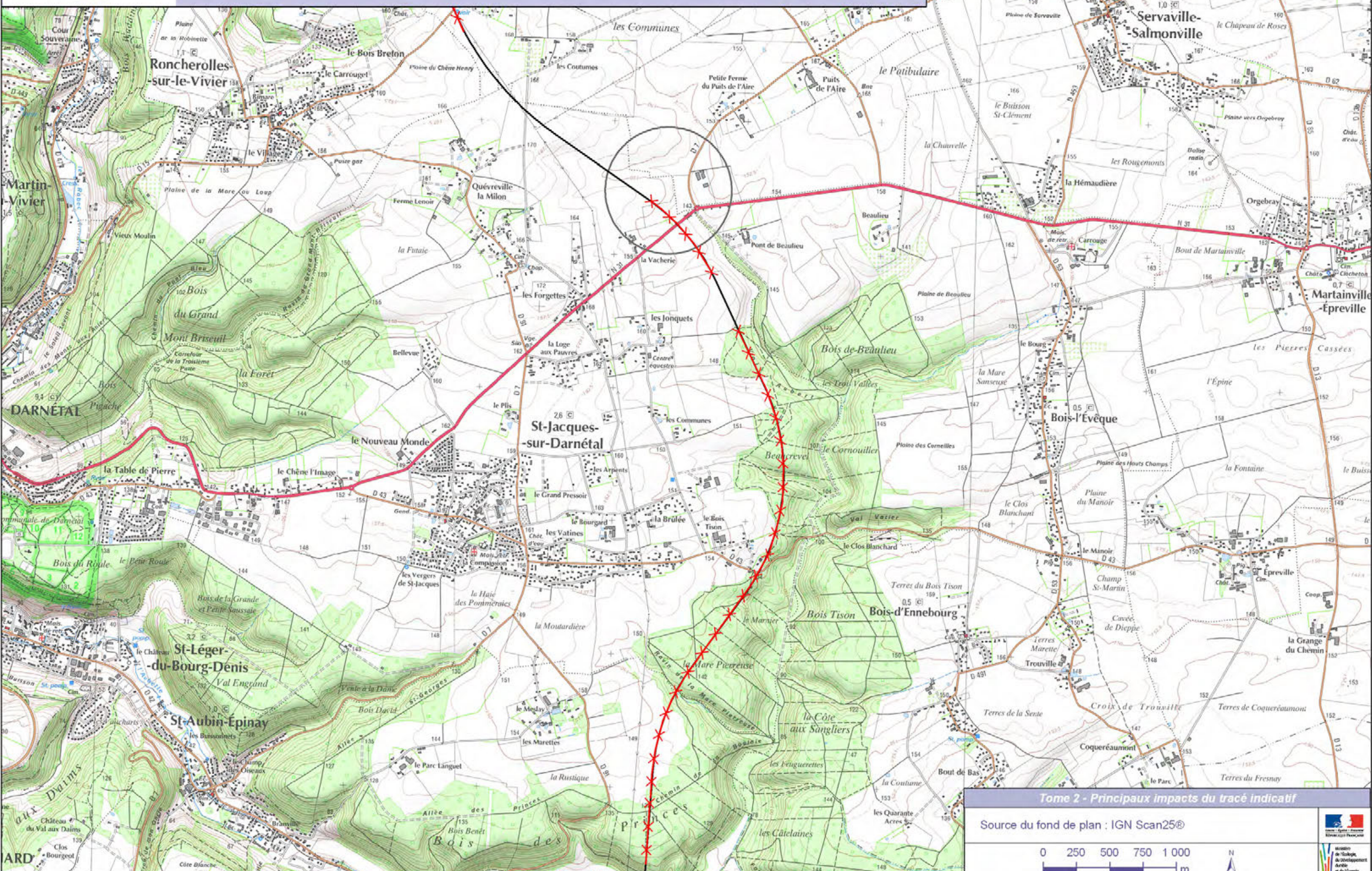
ENVIRONNEMENT NATUREL

Tome 2 : Présentation des impacts et mesures au niveau de la variante retenue

ENVIRONNEMENT NATUREL

Impacts sur les espèces et habitats d'espèces

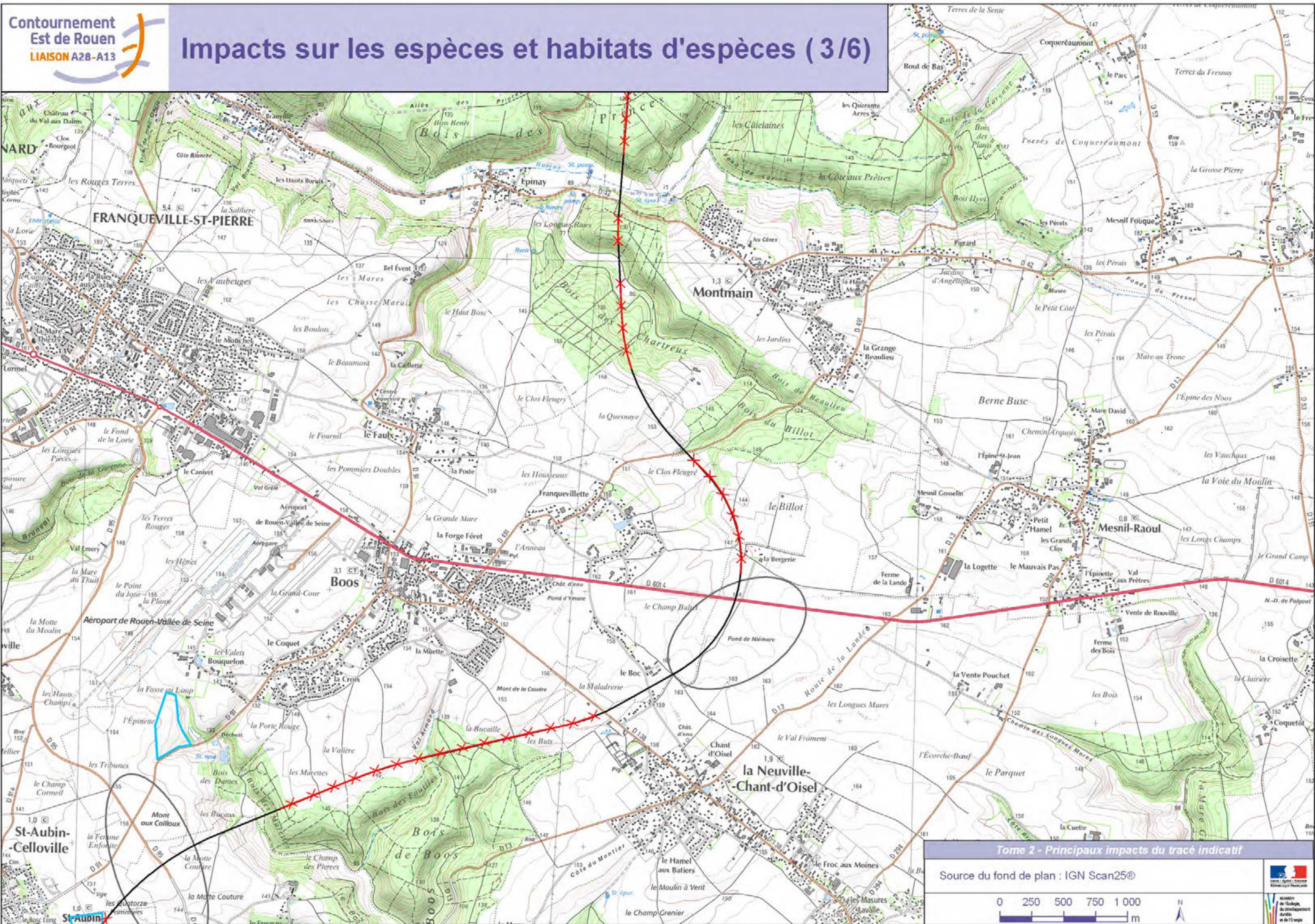




Tome 2 - Principaux impacts du tracé indicatif

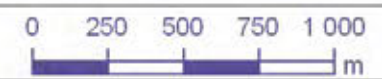
Source du fond de plan : IGN Scan25®

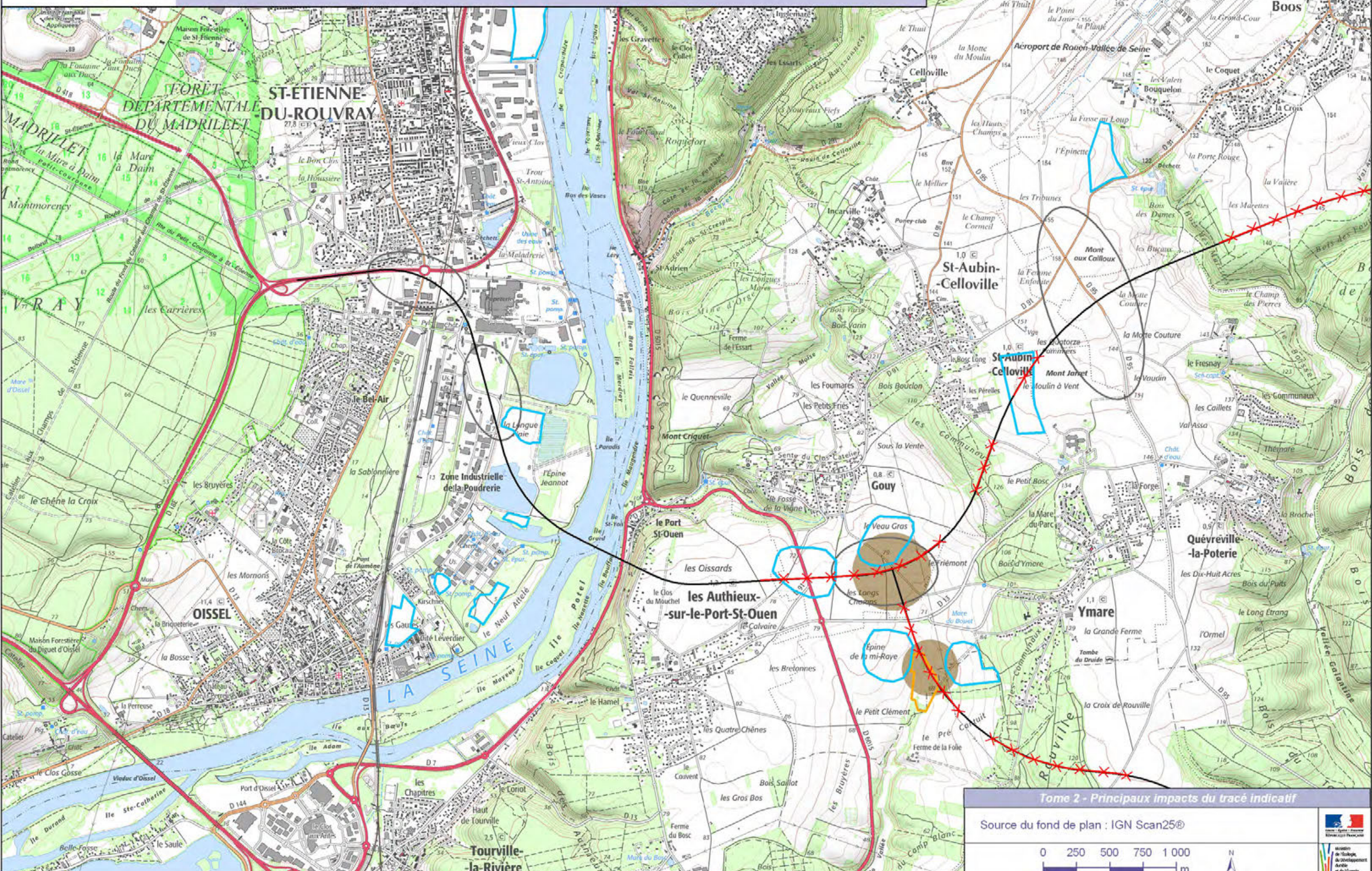




Tome 2 - Principaux impacts du tracé indicatif

Source du fond de plan : IGN Scan25®
















Tome 2 - Principaux impacts du tracé indicatif

Source du fond de plan : IGN Scan25®






Légende :

Habitats d'espèces patrimoniales et/ou protégées détruits :



-  Habitat de la Bondrée apivore
-  Habitat de la Chouette chevêche
-  Habitat de l'Engoulevent d'Europe
-  Habitat de l'Oedicneme criard
-  Habitat du Pic mar
-  Habitat du Pic noir
-  Mares (zones de reproduction pour les amphibiens) détruites

Zones présentant de fortes sensibilités pour les collisions :

-  Zones les plus sensibles pour les collisions pour l'avifaune
-  Zones les plus sensibles pour les collisions pour les chiroptères

 Ruptures des continuités écologiques

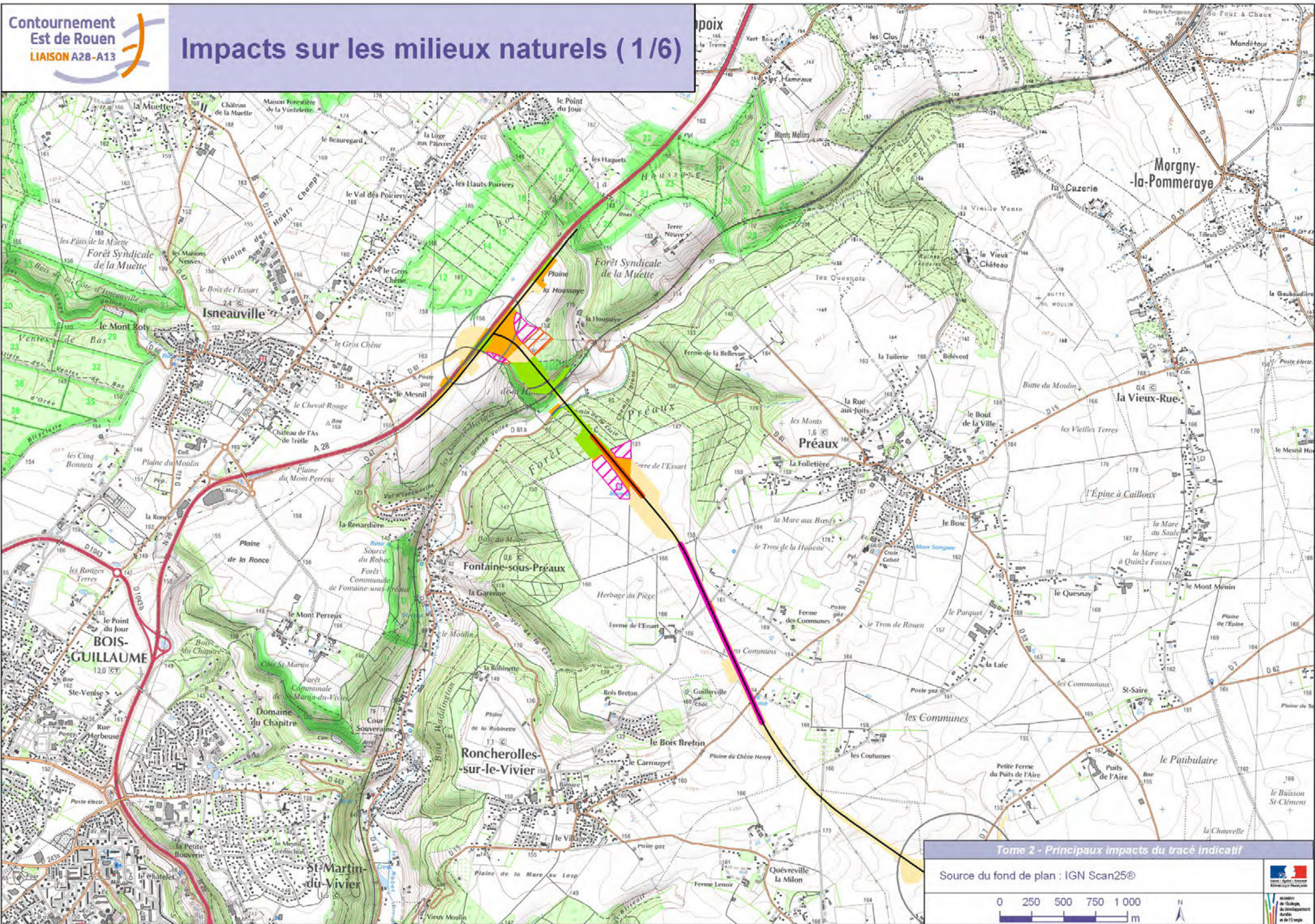
Autres informations :

-  Tracé indicatif
-  Echangeur

Tome 2 : Présentation des impacts et mesures au niveau de la variante retenue

ENVIRONNEMENT NATUREL

Impacts sur les milieux naturels

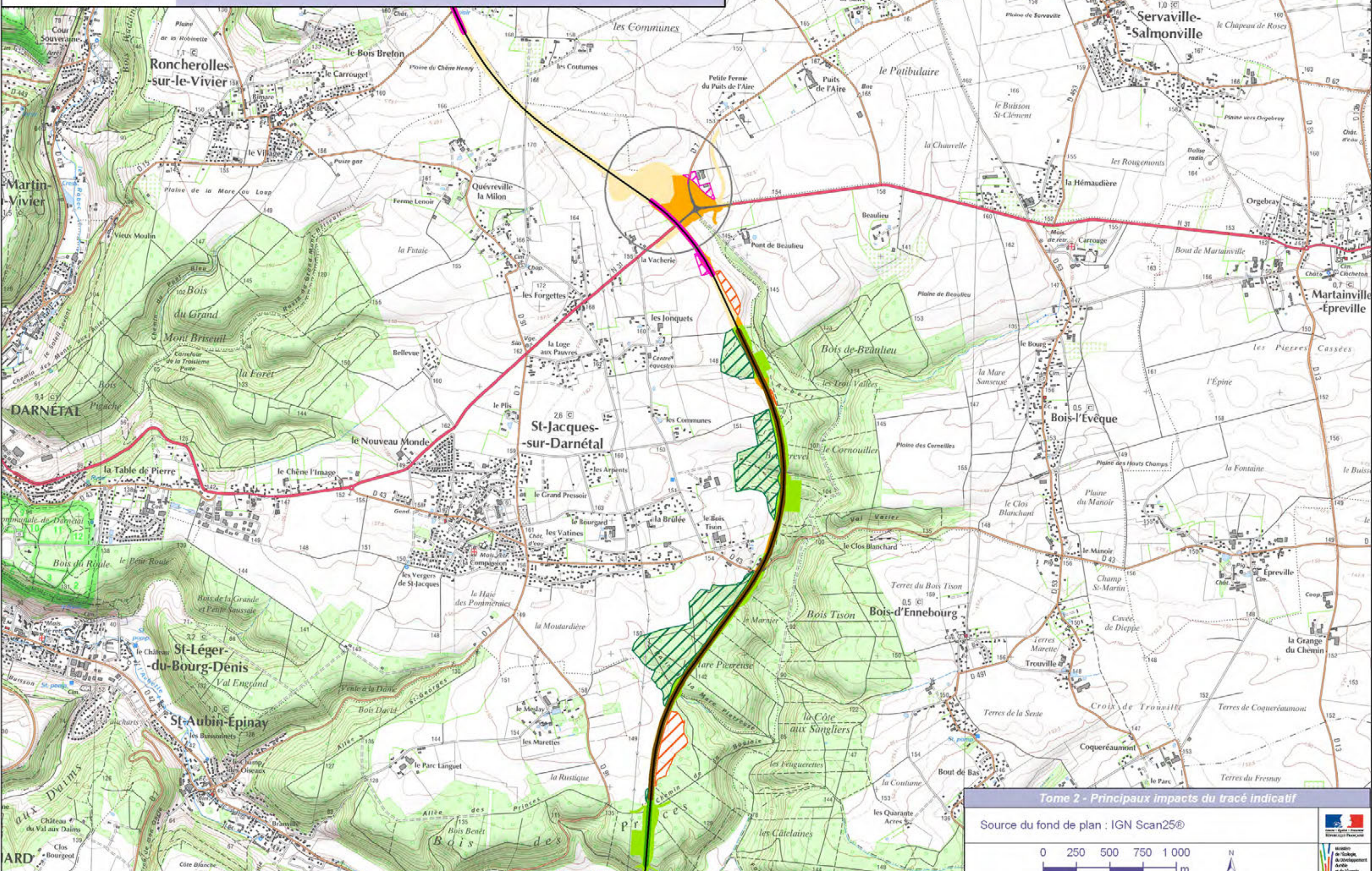


Tome 2 - Principaux impacts du tracé indicatif

Source du fond de plan : IGN Scan25®

0 250 500 750 1 000 m

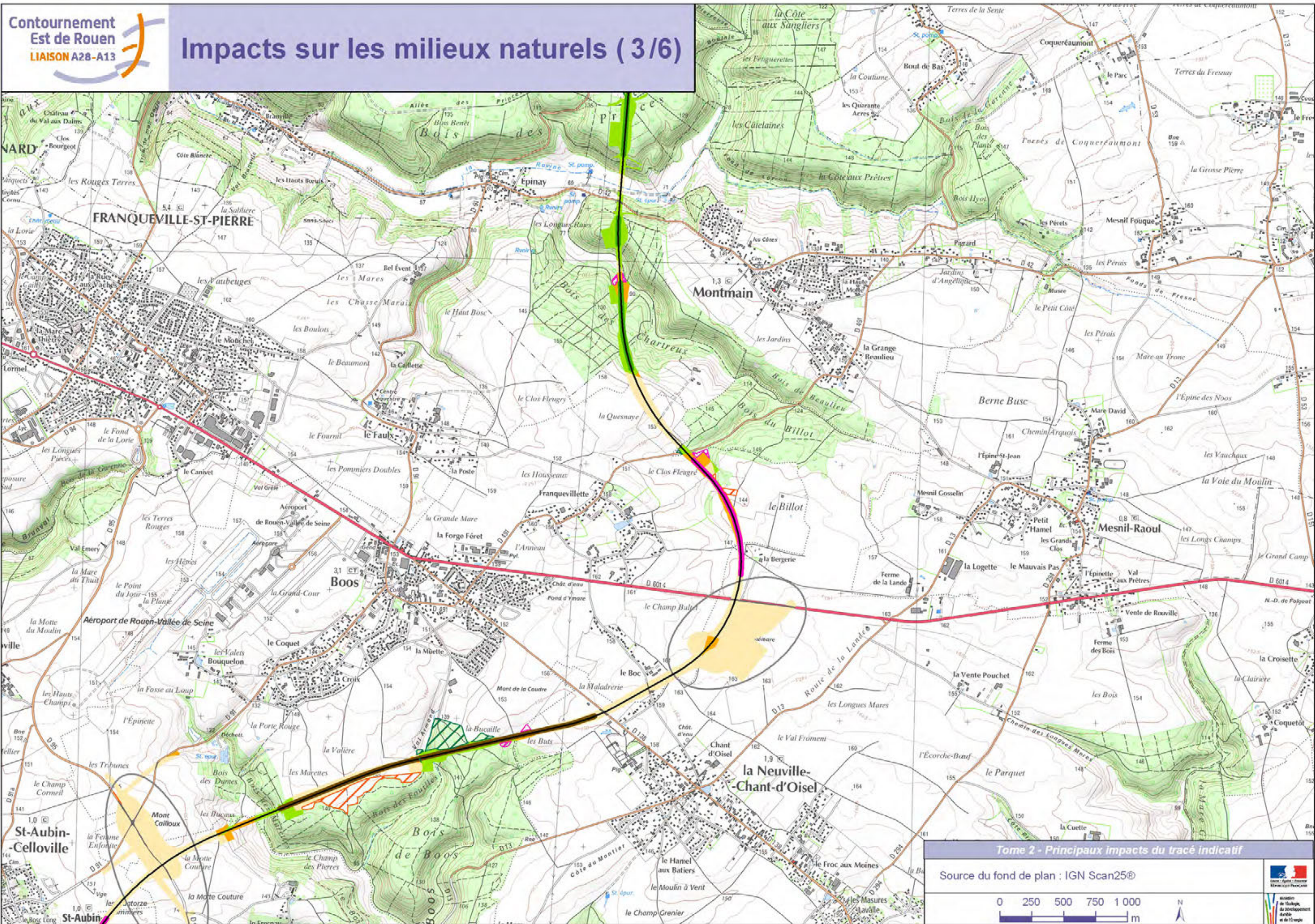




Tome 2 - Principaux impacts du tracé indicatif

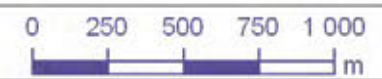
Source du fond de plan : IGN Scan25®

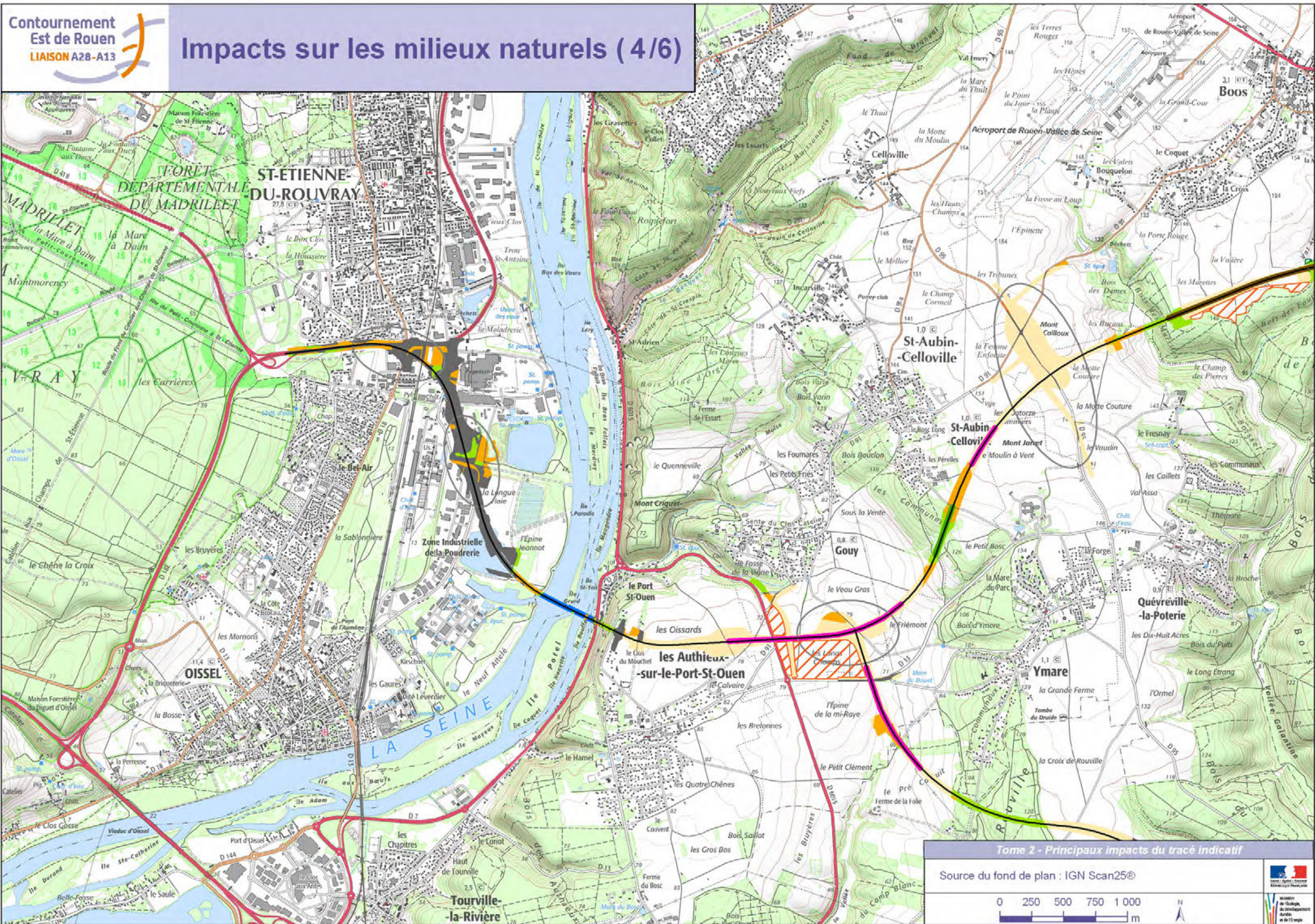


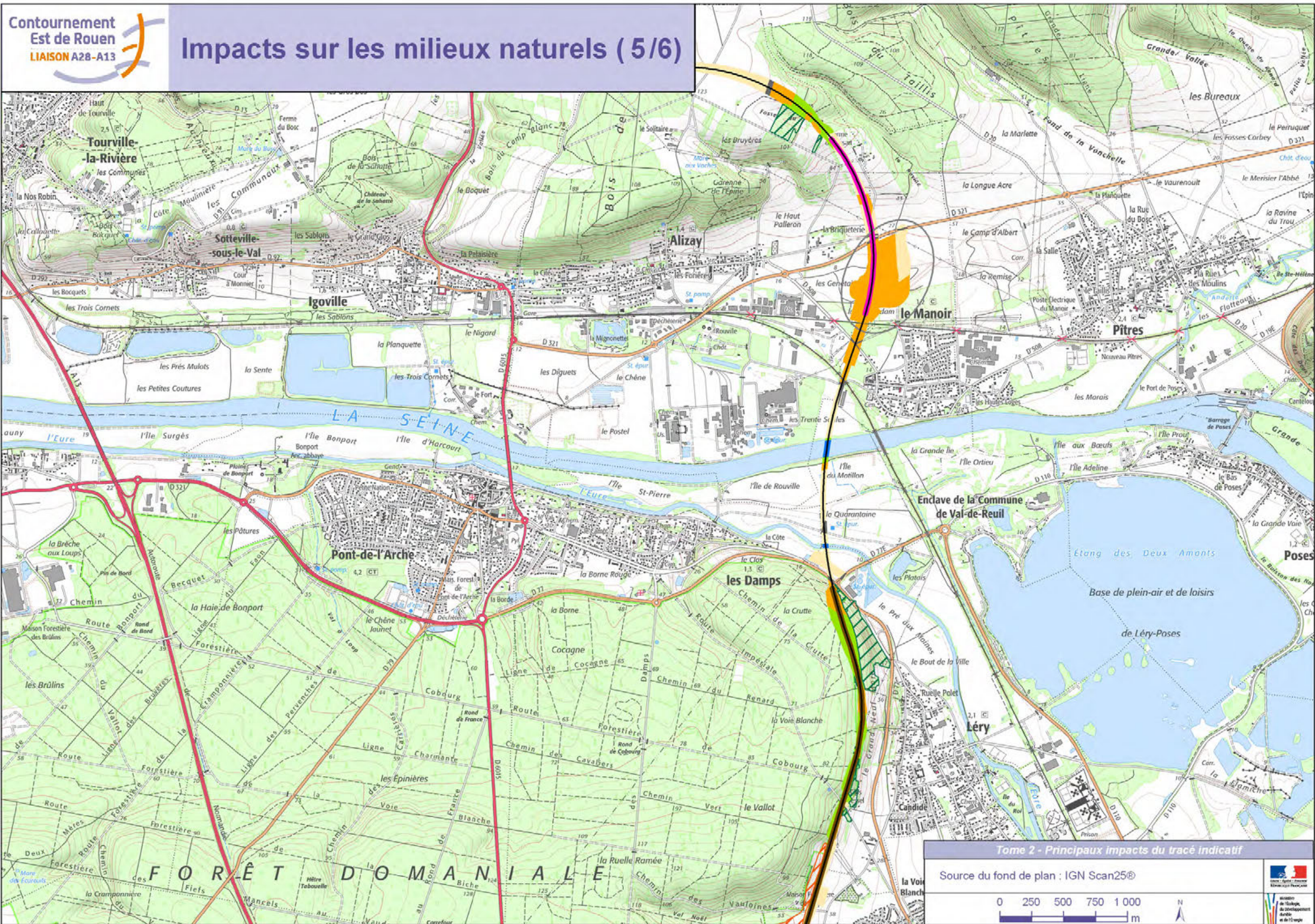


Tome 2 - Principaux impacts du tracé indicatif

Source du fond de plan : IGN Scan25®



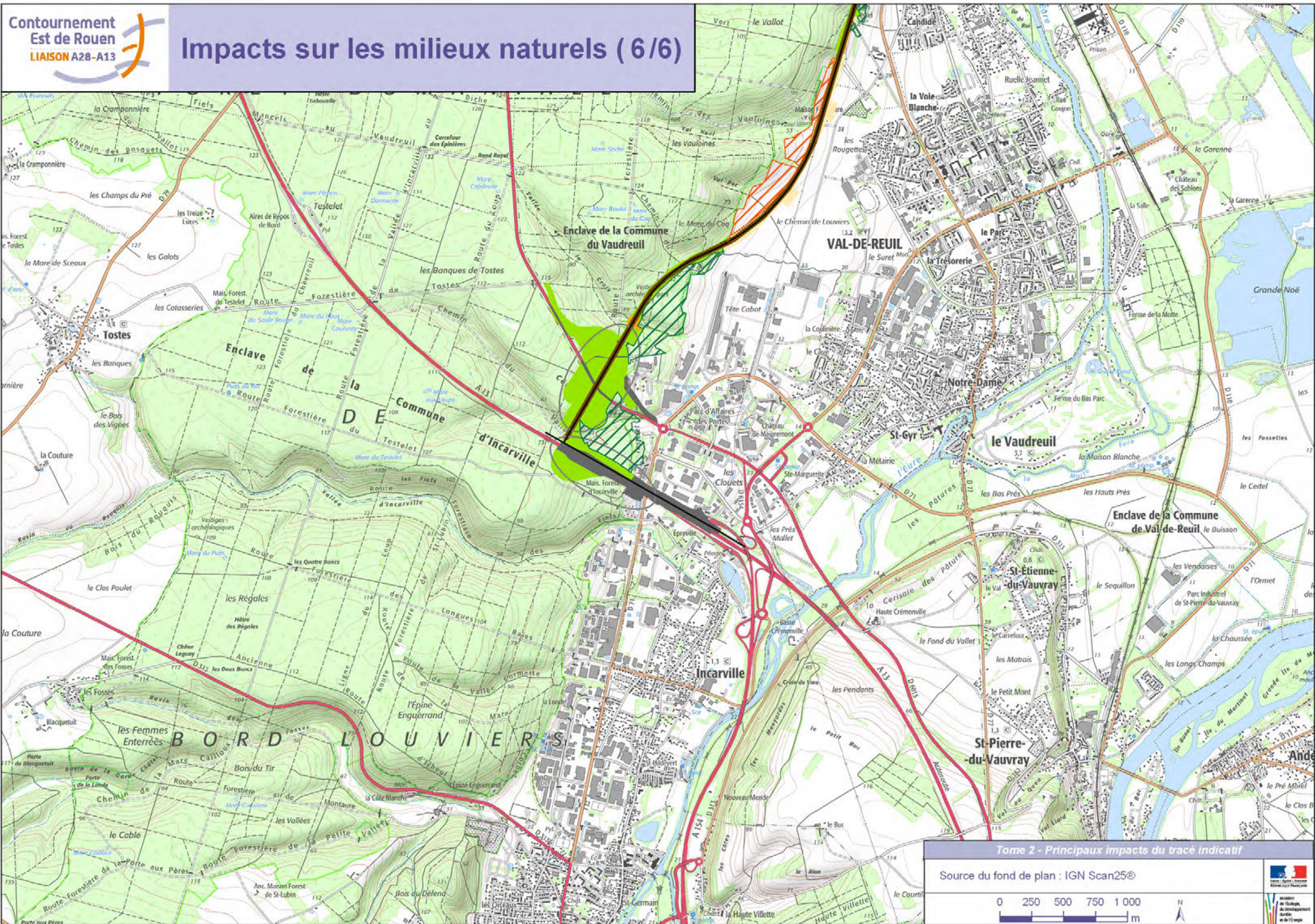




Tome 2 - Principaux impacts du tracé indicatif

Source du fond de plan : IGN Scan25®







Tome 2 - Principaux impacts du tracé indicatif



Source du fond de plan : IGN Scan25®

0 250 500 750 1000 m






Légende :





Types d'habitats détruits et dégradés :

-  Milieux humides et aquatiques
-  Milieux ouverts et semi-ouverts
-  Milieux boisés
-  Milieux cultureux
-  Milieux anthropiques



Délaissés :

-  cultures et friches post-culturelles
-  ouverts mésophiles
-  boisés

Rupture de continuités :

-  Milieux de lisières
-  Milieux de lisières et milieux boisés
-  Milieux ouverts
-  Milieux boisés

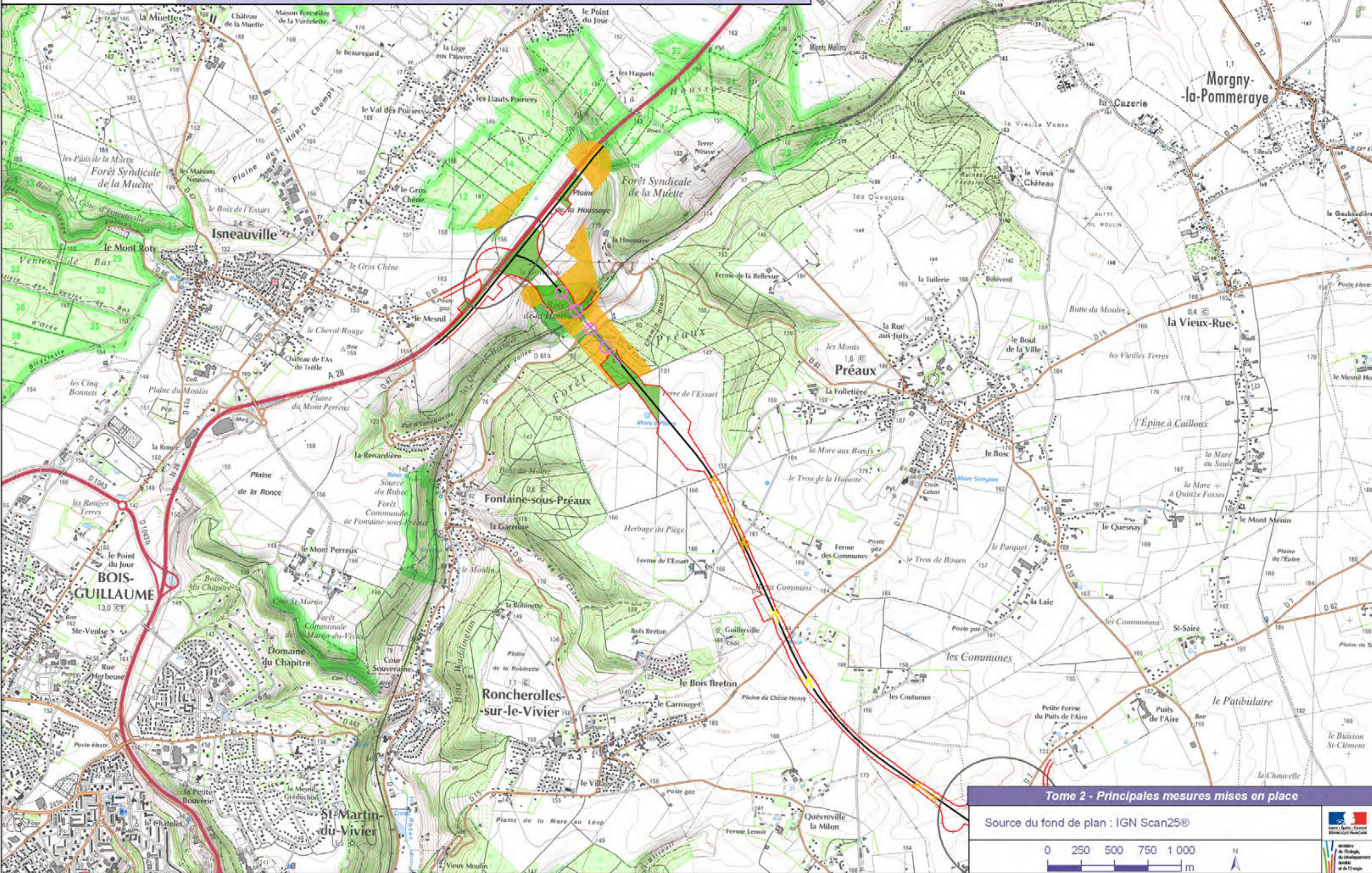
Autres informations :

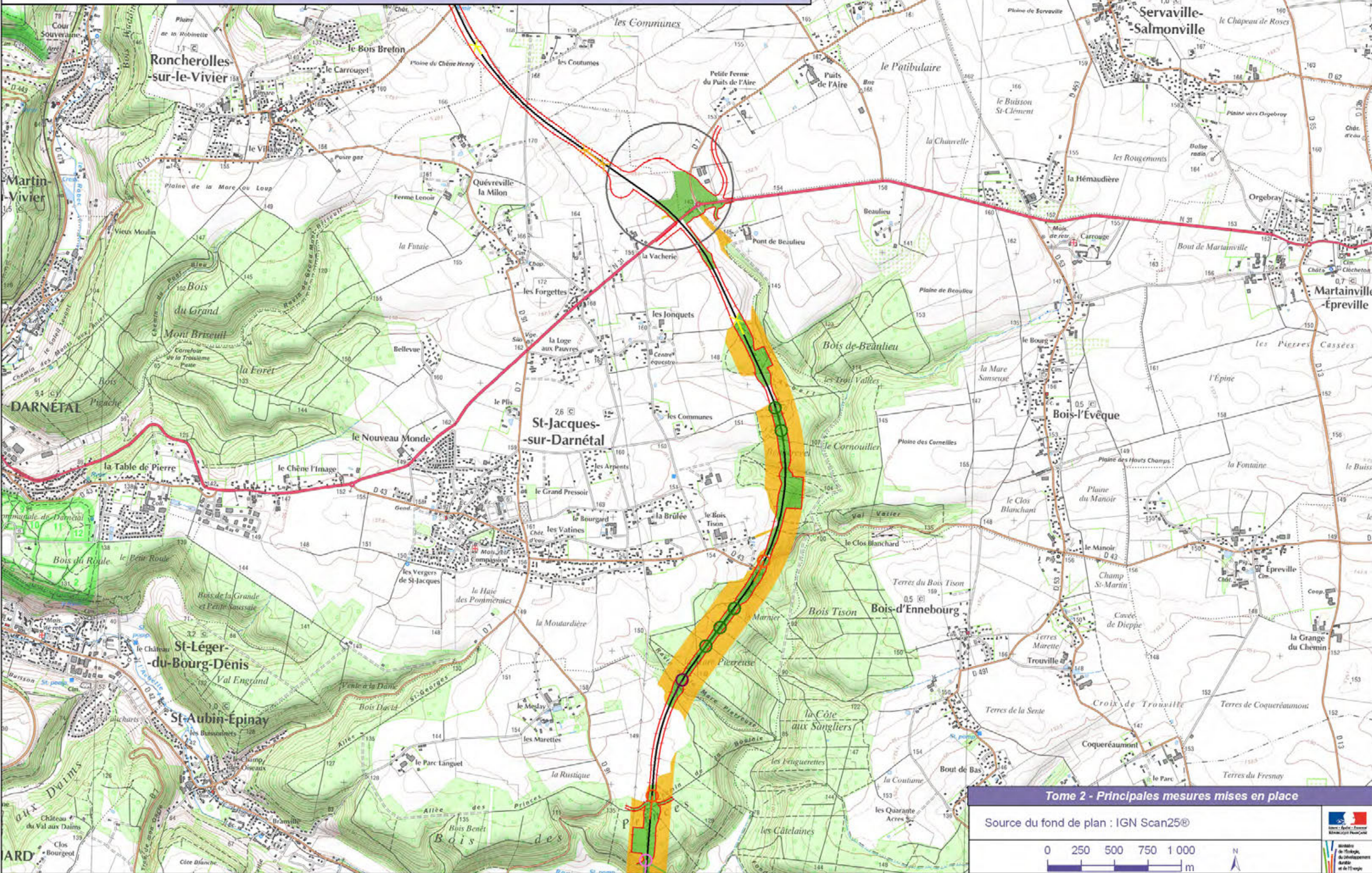
-  Tracé indicatif
-  Emplacements des échangeurs

Tome 2 : Présentation des impacts et mesures au niveau de la variante retenue

ENVIRONNEMENT NATUREL

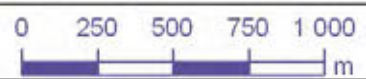
Mesures relatives aux milieux naturels

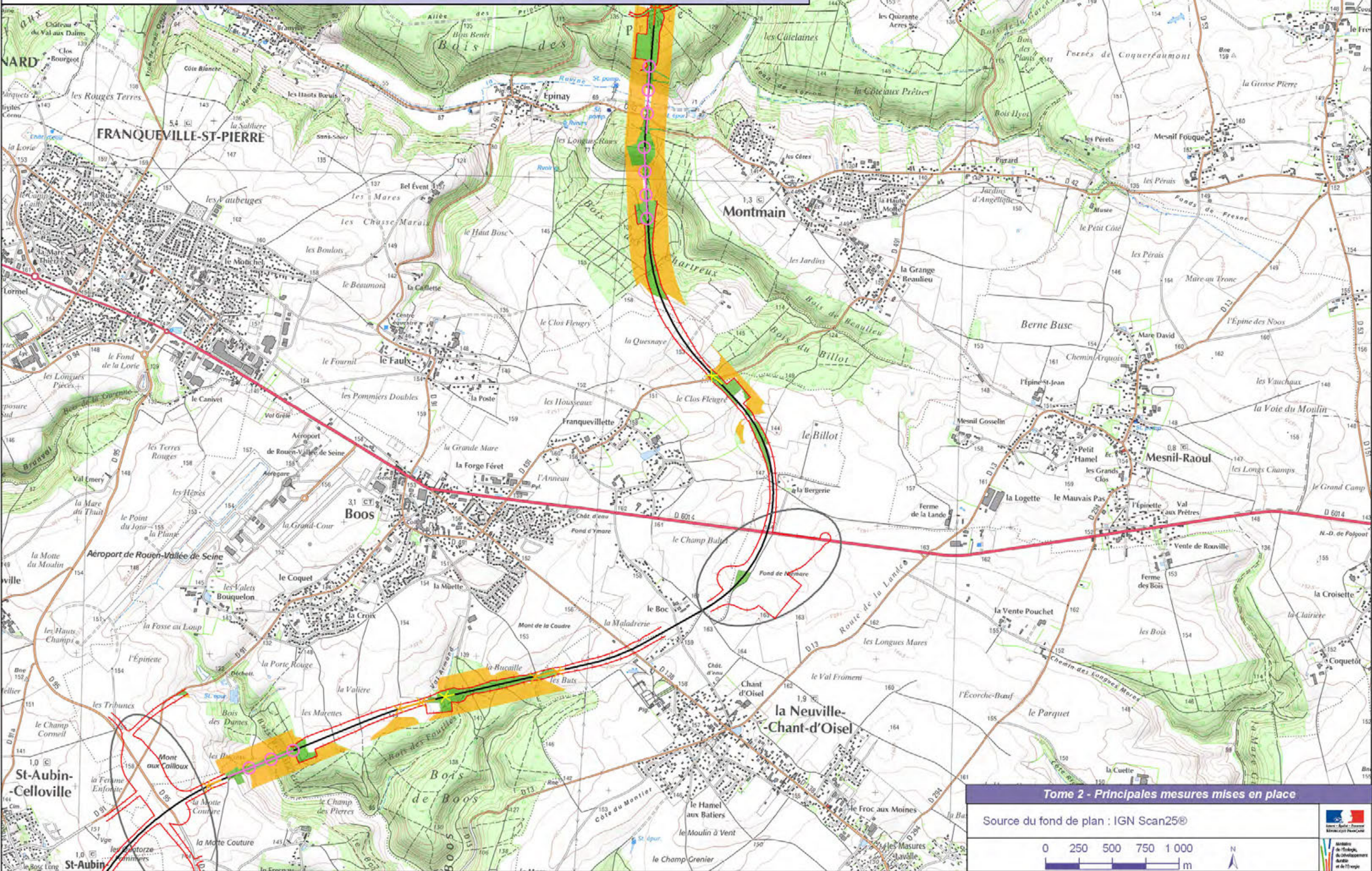


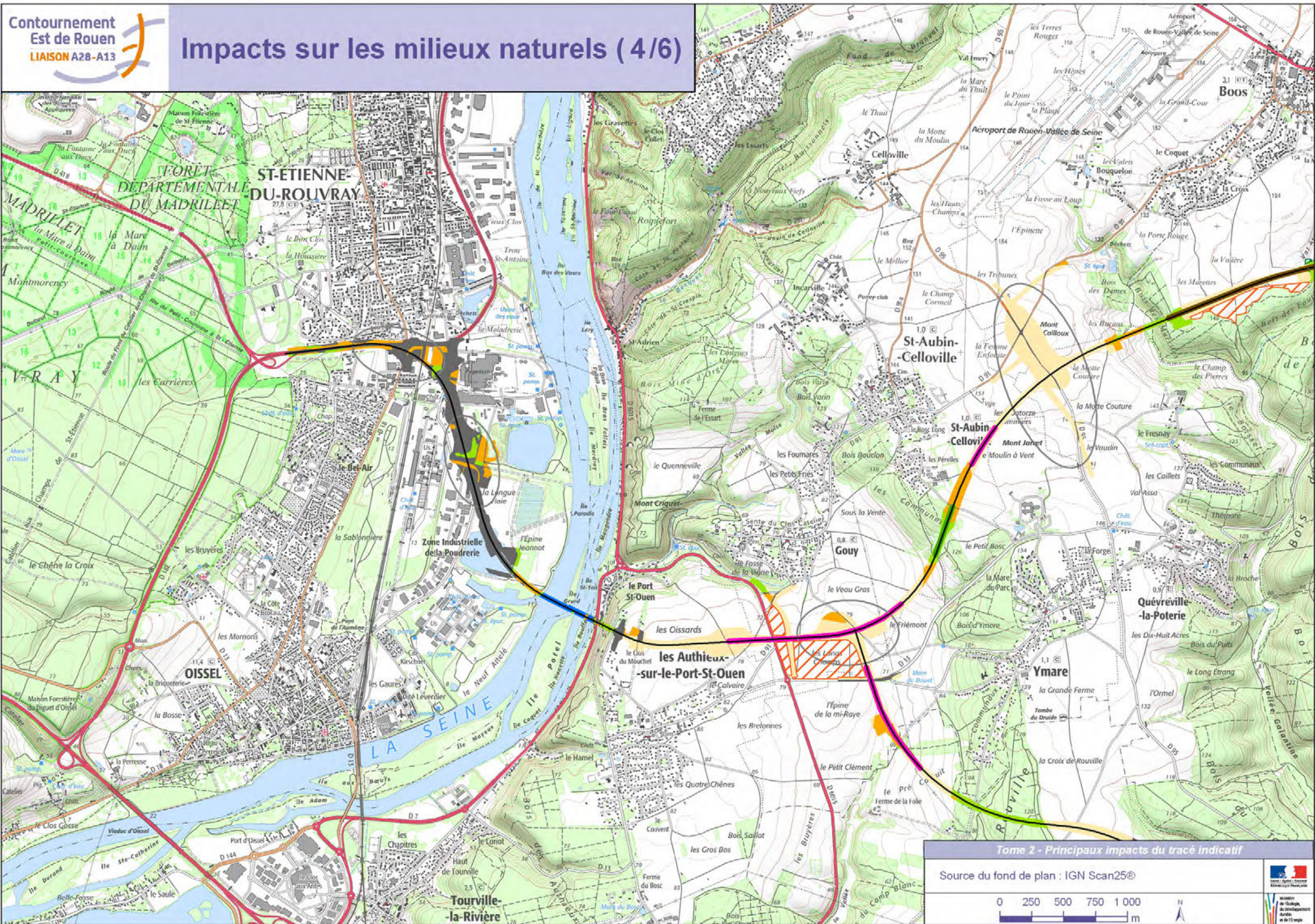


Tome 2 - Principales mesures mises en place

Source du fond de plan : IGN Scan25®

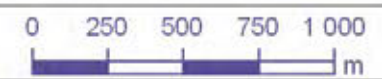


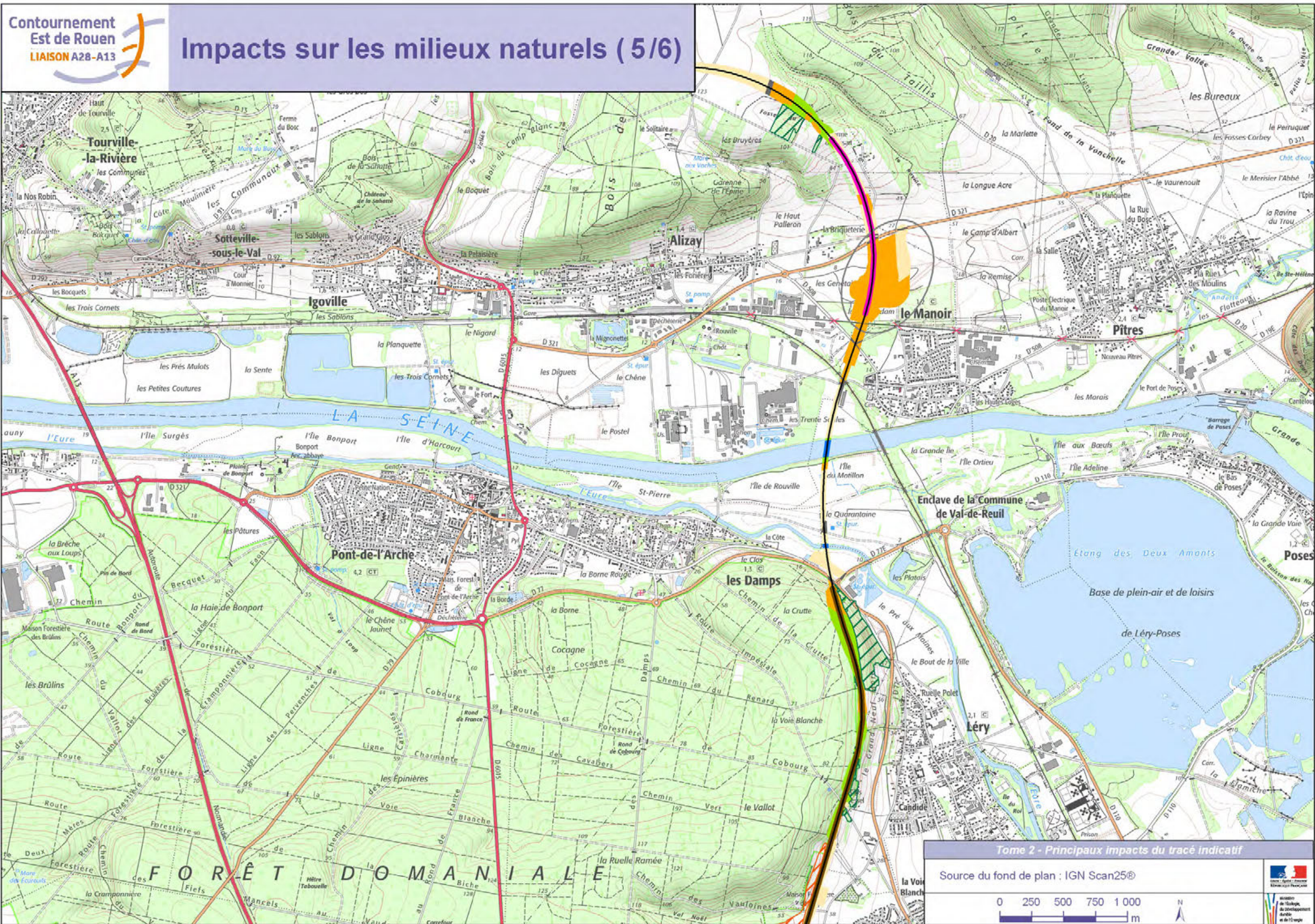




Tome 2 - Principaux impacts du tracé indicatif

Source du fond de plan : IGN Scan25®

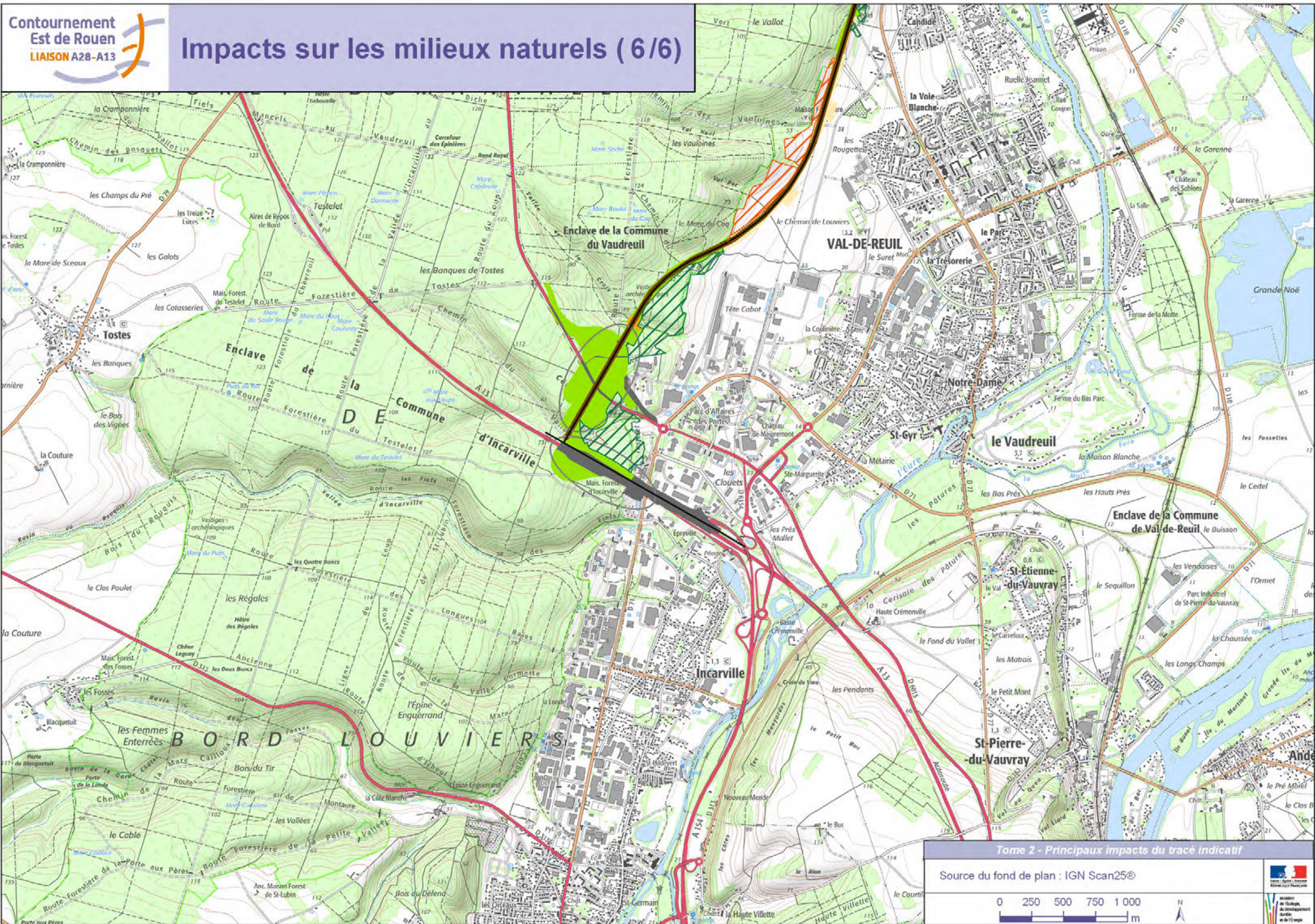




Tome 2 - Principaux impacts du tracé indicatif

Source du fond de plan : IGN Scan25®







Tome 2 - Principaux impacts du tracé indicatif

Source du fond de plan : IGN Scan25®






Légende :





Types d'habitats détruits et dégradés :

-  Milieux humides et aquatiques
-  Milieux ouverts et semi-ouverts
-  Milieux boisés
-  Milieux cultureux
-  Milieux anthropiques



Délaissés :

-  cultures et friches post-culturelles
-  ouverts mésophiles
-  boisés

Rupture de continuités :

-  Milieux de lisières
-  Milieux de lisières et milieux boisés
-  Milieux ouverts
-  Milieux boisés

Autres informations :

-  Tracé indicatif
-  Emplacements des échangeurs